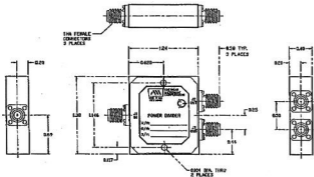


REV.		REVISED	BY	APPROVED
1	A	ORIGINAL RELEASE	SM/PT/MT	



### SPECIFICATIONS

FREQUENCY.....	0.3-2.0 GHz
INSERTION LOSS.....	0.7 dB MAX
VSWR INPUT.....	1.3:1
VSWR OUTPUT.....	1.3:1
ISOLATION.....	20.0 dB MIN
AMPLITUDE BALANCE.....	0.3 dB
PHASE BALANCE.....	3.0°
AVERAGE POWER	
INT. LOAD VSWR.....	1.3:1 25 WATTS
.....	2.1:1 15 WATTS
.....	OC 2 WATTS
WEIGHT.....	1.5 Gm.

### ENVIRONMENTAL RATINGS

TEMPERATURE.....	-55°C TO +55°C (OPERATION)
.....	-55°C TO +100°C (STORAGE)
SHOCK.....	ML-STD-202F, METHOD 1038 COND. B
VIBRATION.....	ML-STD-202F, METHOD 2139 COND. B
VIBRATION.....	ML-STD-202F, METHOD 2040 COND. B
ALTITUDE.....	ML-STD-202F, METHOD 1006 COND. B
TEMPERATURE CYCLE.....	ML-STD-202F, METHOD 1070 COND. A

DIMENSIONS ARE IN INCHES.  
TOLERANCES: X.XX ±0.010  
X.XXX ±0.005

PART NO.		AMERICAN MICROWAVE CORPORATION FREDERICK, MARYLAND	
REV.	DATE	DESCR.	
1	12/22/56	OUTLINE APD-2-052 POWER DIVIDER	
1	A	REV. NO.	DATE
1	A	50483	100-4009
SCALE 1:1		PAGE 1 of 1	